



1626

Air

Peli understands that finding the right protection, with the perfect fit for your gear, is a priority. Peli™ Air began with long protection and quickly grew to offer you deep protection. The time has come to combine those two in order to create Peli's new Long/Deep Series. Gone are the days of dangerously forcing your equipment into the wrong size case or leaving it unprotected with no other options. With Peli's Long/Deep series, we've created the missing link so that no matter the demands of your gear, Peli has you covered.

- Automatic pressure equalization valve - balances interior pressure, keeps water out
- Fold down over-molded handle
- Retractable extension trolley handle
- Stainless steel padlock protectors
- Business card holder
- Quiet rolling stainless-steel bearing wheels
- Press and Pull™ Latches
- Super-light proprietary HPX2™ Polymer - up to 40% lighter
- Waterproof O-ring seal
- User-customizable Pick N Pluck™ foam
- Waterproof, crushproof, dustproof
- IP67 & MIL-SPEC certified
- Limited Lifetime Warranty (Where applicable by law)



CONFIGURATIONS



1626
Standard



1626WF
With Foam



1626NF
No Foam



1626WD
With Padded Dividers

DIMENSIONS

Interior (LxWxD)	28.14 x 14.10" x 11.72 (71.5 x 35.8 x 29.8 cm)
Exterior (LxWxD)	31.12 x 17.05" x 13.33 (79 x 43.3 x 33.9 cm)
Lid Depth	2.00" (5.1 cm)
Bottom Depth	9.72" (24.7 cm)
Total Depth	11.72" (29.8 cm)
Int Volume	2.69 ft ³ (0.076 m ³)
Padlock Hole Diameter	0.31" (0.8 cm)

MATERIALS

Body	Proprietary Polypropylene Blend
Latch	ABS
O-Ring	EPDM

Purge Body ABS
Purge Vent Hi-Flow Gore-Tex 3 Micron Hydrophobic Non-Woven

COLOURS

■ Black

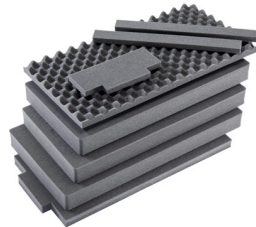
WEIGHT

Weight With Foam 18.10 lbs (8.2 kg)
Weight Empty 14.65 lbs (6.6 kg)
Buoyancy 185.32 lbs (84.1 kg)

TEMPERATURE

Minimum Temperature -60°F (-51.1 °C)
Maximum Temperature 160°F (71.1 °C)

ACCESSORIES



1626AirFS
8 pc. Replacement Foam Set

Peli

c/ Provença, 388, Planta 7 • Barcelona, Spain 08025 • Phone: +34 934 674 999
info@peli.com • www.peli.com

Document created on 03-13-25