



## 1600EU Protector

Sensitive equipment needs protection, and since 1976 the answer has been the Peli™ Protector Case. These cases are designed rugged, and travel the harshest environments on earth. Against the extreme cold of the arctic or the heat of battle, Peli cases have survived. These tough cases are designed with an automatic purge valve, that equalizes air pressure, a watertight silicone O-ring lid, over-molded rubber handles and stainless steel hardware.

- **Watertight, crushproof, and dustproof**
- 2 level Pick N Pluck™ with convoluted lid foam
- Automatic pressure equalization valve - balances interior pressure, keeps water out
- Comfortable rubber over-molded handle
- O-ring seal
- Open cell core with solid wall design - strong, light weight
- Stainless steel hardware and padlock protectors
- Made in Germany
- Peli's legendary lifetime guarantee\*\*
- \* Where applicable by law



### CONFIGURATIONS



**1600EU**  
Standard



**1604**  
With Padded Dividers



**1600NF**  
No Foam



**1600WF**  
With Foam

### DIMENSIONS


|                              |   |
|------------------------------|---|
| <b>Interior (L×W×D)</b>      | 21.51 x 16.54" x 7.95 (54.6 x 42 x 20.2 cm)   |
| <b>Exterior (L×W×D)</b>      | 24.35 x 19.46" x 8.75 (61.8 x 49.4 x 22.2 cm) |
| <b>Lid Depth</b>             | 1.75" (4.4 cm)                                |
| <b>Bottom Depth</b>          | 6.12" (15.5 cm)                               |
| <b>Total Depth</b>           | 7.87" (20 cm)                                 |
| <b>Int Volume</b>            | 1.64 ft³ (0.046 m³)                           |
| <b>Padlock Hole Diameter</b> | 5/16" (12.7 cm)                               |

### MATERIALS

|                   |                     |
|-------------------|---------------------|
| <b>Body</b>       | Polypropylene       |
| <b>Latch</b>      | ABS                 |
| <b>O-Ring</b>     | Polymer             |
| <b>Pins</b>       | Stainless Steel     |
| <b>Foam</b>       | 1.3 lb Polyurethane |
| <b>Purge Body</b> | ABS                 |

**Purge Vent**

3 Micron Hydrophobic Non-Woven

**COLOURS** Black  
 Silver Desert Tan  
 Yellow Orange OD Green**WEIGHT**

|                         |                      |
|-------------------------|----------------------|
| <b>Weight With Foam</b> | 14.11 lbs (6.4 kg)   |
| <b>Weight Empty</b>     | 13.00 lbs (5.9 kg)   |
| <b>Buoyancy</b>         | 117.00 lbs (53.1 kg) |

**TEMPERATURE**

|                            |                 |
|----------------------------|-----------------|
| <b>Minimum Temperature</b> | -40°F (-40 °C)  |
| <b>Maximum Temperature</b> | 210°F (98.9 °C) |

**CERTIFICATIONS**

**IP67**  
**MIL C-4150J**  
**Def Stan 81-41**  
**ATA 300**

**OTHER**

|                    |     |
|--------------------|-----|
| <b>Master Pack</b> | 2   |
| <b>Nameplate</b>   | yes |
| <b>Military</b>    | yes |

**ACCESSORIES**

**1601**  
4 pc. Replacement Foam Set



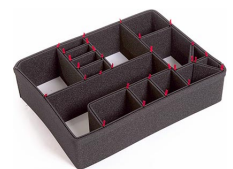
**1603**  
Replacement O-ring



**1605**  
Padded Divider Set



**1609**  
Lid Organizer



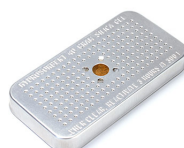
**1600EUTP**  
TrekPak Case Divider Kit



**1507**  
Quick Mounts - set of 4



**1506TSA**  
TSA Lock



**1500D**  
Desiccant Silica Gel



**1605EMS**  
EMS Accessory Set (Lid Organizer and Divider Set)

c/ Provença, 388, Planta 7 • Barcelona, Spain 08025 • Phone: +34 934 674 999  
[info@peli.com](mailto:info@peli.com) • [www.peli.com](http://www.peli.com)

*Document created on 05-16-24*