



1646

Air

Peli understands that finding the right protection, with the perfect fit for your gear, is a priority. Peli™ Air began with long protection and quickly grew to offer you deep protection. The time has come to combine those two in order to create Peli's new Long/Deep Series. Gone are the days of dangerously forcing your equipment into the wrong size case or leaving it unprotected with no other options. With Peli's Long/Deep series, we've created the missing link so that no matter the demands of your gear, Peli has you covered.

- Automatic pressure equalization valve - balances interior pressure, keeps water out
- Fold down over-molded handle
- Retractable extension trolley handle
- Stainless steel padlock protectors
- Business card holder
- Quiet rolling stainless-steel bearing wheels
- Press and Pull™ Latches
- Limited Lifetime Warranty
- Super-light proprietary HPX²™ Polymer - up to 40% lighter
- Waterproof O-ring seal
- Waterproof, crushproof, dustproof
- IP67 & MIL-SPEC certified



DIMENSIONS

Interior (LxWxD)	32.06 x 15.87" x 13.42 (81.4 x 40.3 x 34.1 cm)
Exterior (LxWxD)	35.29 x 19.00" x 15.08 (89.6 x 48.3 x 38.3 cm)
Lid Depth	1.98" (5 cm)
Bottom Depth	11.44" (29.1 cm)
Total Depth	13.42" (34.1 cm)
Int Volume	3.95 ft ³ (0.112 m ³)
Padlock Hole Diameter	0.31" (0.8 cm)

MATERIALS

Body	Proprietary Polypropylene Blend
Latch	ABS
O-Ring	EPDM
Purge Body	ABS
Purge Vent	Hi-Flow Gore-Tex 3 Micron Hydrophobic Non-Woven

COLOURS

- Black

WEIGHT

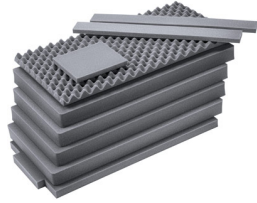
Weight With Foam	25.70 lbs (11.66 kg)
Weight Empty	20.50 lbs (9.3 kg)
Buoyancy	263.00 lbs (119.29 kg)

TEMPERATURE

Minimum Temperature 0°F (-17.8 °C)

Maximum Temperature 140°F (60 °C)

ACCESSORIES



1646AirFS

9 pc. Replacement Foam Set



AIRHANDL

EZ-Pull Multi-Stage Air Handle

Peli

c/ Provença, 388, Planta 7 • Barcelona, Spain 08025 • Phone: +34 934 674 999

info@peli.com • www.peli.com

Document created on 01-16-26