



1770 Protector Long Case

Sensitive equipment needs protection, and since 1976 the answer has been the Peli™ Protector Case. These cases are designed rugged, and travel the harshest environments on earth. Against the extreme cold of the artic or the heat of battle, Peli cases have survived. Made in the USA, these tough cases are designed with an automatic purge valve, that equalizes air pressure, a watertight silicone O-ring lid, over-molded rubber handles and stainless steel hardware.

- **Also available from Peli: The 1740 Long Case**
- **Four extra-deep base-to-lid locking cleats that ensure maximum stacking stability**
- **Watertight, crushproof, and dustproof**
- 4-piece foam set
- O-ring seal
- Open cell core, polymer wall construction
- Stainless steel hardware and padlock protectors
- Two Integrated Automatic Pressure Equalization Valves
- Two rugged double-wide handles
- Wide-track polyurethane wheels with ball bearings and nylon hubs
- Comfortable rubber over-molded side-carry handle



CONFIGURATIONS



1770
Standard



1770NF
No Foam



1770WF
With Foam

DIMENSIONS

Interior (LxWxD)	54.58 x 15.58" x 8.63 (138.6 x 39.6 x 21.9 cm)
Exterior (LxWxD)	57.42 x 18.48" x 11.23 (145.8 x 46.9 x 28.5 cm)
Lid Depth	1.88" (4.8 cm)
Bottom Depth	6.75" (17.1 cm)
Total Depth	8.63" (21.9 cm)
Int Volume	4.25 ft ³ (0.12 m ³)
Padlock Hole Diameter	5/16" (12.7 cm)

MATERIALS

Body	Polypropylene
Latch	ABS
O-Ring	EPDM
Pins	Stainless Steel

Purge Body ABS
Purge Vent 3 Micron Hydrophobic Non-Woven

COLOURS

■ Black ■ Desert Tan

WEIGHT

Weight With Foam 36.00 lbs (16.3 kg)
Weight Empty 29.00 lbs (13.2 kg)
Buoyancy 280.00 lbs (127 kg)
Master Pack Weight 39.50 lbs (17.9 kg)

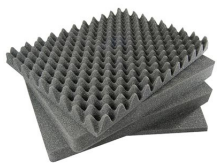
FOAM PROPERTIES

Layer 1 (Lid) 1.88" Pad
Layer 2 (Base) 3.75" Pick N Pluck
Layer 3 (Base) 1.50" Pad
Layer 4 (Base) 1.50" Pad

OTHER

Master Pack 1

ACCESSORIES



1771
4 pc. Replacement Foam Set



1773
Replacement O-ring



1630DC
Document Container
Accessory



1506TSA
TSA Lock



1500D
Desiccant Silica Gel

Peli

c/ Provença, 388, Planta 7 • Barcelona, Spain 08025 • Phone: +34 934 674 999
info@peli.com • www.peli.com

Document created on 10-23-19