



# 1556

## Air

Peli understands that finding the right protection, with the perfect fit for your gear, is a priority. Peli™ Air began with long protection and quickly grew to offer you deep protection. The time has come to combine those two in order to create Peli's new Long/Deep Series. Gone are the days of dangerously forcing your equipment into the wrong size case or leaving it unprotected with no other options. With Peli's Long/Deep series, we've created the missing link so that no matter the demands of your gear, Peli has you covered.

- Automatic pressure equalization valve - balances interior pressure, keeps water out
- Fold down over-molded handle
- Retractable extension trolley handle
- Stainless steel padlock protectors
- Business card holder
- Maximum airline carry-on size\*
- Press and Pull™ Latches
- Limited Lifetime Warranty
- Super-light proprietary HPX2™ Polymer - up to 40% lighter
- Waterproof O-ring seal
- User-customizable Pick N Pluck™ foam
- Waterproof, crushproof, dustproof
- IP67 & MIL-SPEC certified



### CONFIGURATIONS



**1556**  
Standard



**1556WF**  
With Foam



**1556NF**  
No Foam

### DIMENSIONS

<b>Interior (LxWxD)</b>	21.63 x 10.76" x 8.97 (54.9 x 27.3 x 22.8 cm)
<b>Exterior (LxWxD)</b>	23.43 x 13.52" x 10.57 (59.5 x 34.3 x 26.8 cm)
<b>Lid Depth</b>	2.00" (5.1 cm)
<b>Bottom Depth</b>	6.97" (17.7 cm)
<b>Total Depth</b>	8.97" (22.8 cm)
<b>Int Volume</b>	1.21 ft <sup>3</sup> (0.034 m <sup>3</sup> )
<b>Padlock Hole Diameter</b>	0.31" (0.8 cm)

### MATERIALS

<b>Body</b>	Proprietary Polypropylene Blend
<b>Latch</b>	ABS
<b>O-Ring</b>	EPDM

**Purge Body** ABS  
**Purge Vent** Hi-Flow Gore-Tex 3 Micron Hydrophobic Non-Woven

## COLOURS

---

■ Black

## WEIGHT

---

**Weight With Foam** 11.20 lbs (5.1 kg)  
**Weight Empty** 9.75 lbs (4.4 kg)  
**Buoyancy** 84.95 lbs (38.5 kg)

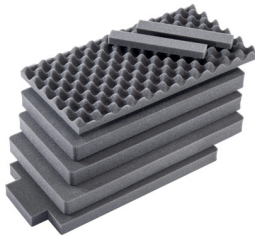
## TEMPERATURE

---

**Minimum Temperature** -60°F (-51.1 °C)  
**Maximum Temperature** 160°F (71.1 °C)

## ACCESSORIES

---



**1556AirFS**  
7 pc. Replacement Foam Set



**1506TSA**  
TSA Lock



**RucPac-Pro-1**  
RucPac Pro Hardcase Backpack Conversion

---

### Peli

c/ Provença, 388, Planta 7 • Barcelona, Spain 08025 • Phone: +34 934 674 999  
[info@peli.com](mailto:info@peli.com) • [www.peli.com](http://www.peli.com)

*Document created on 03-30-25*