



1730 Protector Transport Case

Sensitive equipment needs protection, and since 1976 the answer has been the Peli™ Protector Case. These cases are designed rugged, and travel the harshest environments on earth. Against the extreme cold of the arctic or the heat of battle, Peli cases have survived. Made in the USA, these tough cases are designed with an automatic purge valve, that equalizes air pressure, a watertight silicone O-ring lid, over-molded rubber handles and stainless steel hardware.

- **Watertight, crushproof, and dustproof**
- 5-piece foam set
- Automatic pressure equalization valve - balances interior pressure, keeps water out
- Easy open double-throw latches
- Fold down handles
- O-ring seal
- Open cell core with solid wall design - strong, light weight
- Optional Humidity gauge changes color above 40%
- Optional Manual Pressure Equalization Valve
- Stainless steel hardware and padlock protectors



CONFIGURATIONS



1730
Standard



1730NF
No Foam



1730WF
With Foam

DIMENSIONS

Interior (LxWxD)	34.00 x 24.00" x 12.50 (86.4 x 61 x 31.8 cm)
Exterior (LxWxD)	37.50 x 27.13" x 14.37 (95.3 x 68.9 x 36.5 cm)
Lid Depth	2.50" (6.4 cm)
Bottom Depth	10.00" (25.4 cm)
Total Depth	12.5" (31.8 cm)
Int Volume	5.9 ft ³ (0.167 m ³)
Padlock Hole Diameter	0.31" (0.8 cm)

MATERIALS

Body	Polypropylene
Latch	ABS
O-Ring	Polymer
Pins	Stainless Steel
Foam	1.3 lb Polyurethane

Purge Body	ABS
Purge Vent	3 Micron Hydrophobic Non-Woven

COLOURS

■ Black

WEIGHT

Weight With Foam	38.00 lbs (17.2 kg)
Weight Empty	30.00 lbs (13.6 kg)
Buoyancy	416.00 lbs (188.7 kg)
Master Pack Weight	43.00 lbs (19.5 kg)

TEMPERATURE

Minimum Temperature	-40°F (-40 °C)
Maximum Temperature	210°F (98.9 °C)

CERTIFICATIONS

IP67

OTHER

Wheels	2
Master Pack	1
Nameplate	yes

ACCESSORIES



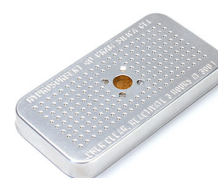
1731
5 pc. Replacement Foam Set



1733
Replacement O-ring



1506TSA
TSA Lock



1500D
Desiccant Silica Gel

Peli

c/ Provença, 388, Planta 7 • Barcelona, Spain 08025 • Phone: +34 934 674 999
info@peli.com • www.peli.com

Document created on 07-17-24