



1700

Protector

Long Case

Sensitive equipment needs protection, and since 1976 the answer has been the Peli™ Protector Case. These cases are designed rugged, and travel the harshest environments on earth. Against the extreme cold of the arctic or the heat of battle, Peli cases have survived. Made in the USA, these tough cases are designed with an automatic purge valve, that equalizes air pressure, a watertight silicone O-ring lid, over-molded rubber handles and stainless steel hardware.

- **Strong polyurethane wheels with stainless steel bearings**
- **Watertight, crushproof, and dustproof**
- 3-piece foam set
- Automatic pressure equalization valve - balances interior pressure, keeps water out
- Easy open double-throw latches
- Fold down side handle
- O-ring seal
- Open cell core with solid wall design - strong, light weight
- Stainless steel hardware and padlock protectors



CONFIGURATIONS



1700
Standard



1700NF
No Foam



1700WF
With Foam

DIMENSIONS

Interior (L×W×D)	35.75 x 13.50" x 5.25 (90.8 x 34.3 x 13.3 cm)
Exterior (L×W×D)	38.12 x 16.00" x 6.12 (96.8 x 40.6 x 15.5 cm)
Lid Depth	1.75" (4.4 cm)
Bottom Depth	3.50" (8.9 cm)
Total Depth	5.25" (13.3 cm)
Int Volume	1.47 ft³ (0.042 m³)
Padlock Hole Diameter	5/16" (12.7 cm)

MATERIALS

Body	Polypropylene
Latch	ABS
O-Ring	Polymer
Pins	Stainless Steel
Foam	1.3 lb Polyurethane
Purge Body	ABS

Purge Vent

3 Micron Hydrophobic Non-Woven

COLOURS

 Black OD Green

WEIGHT

Weight With Foam	16.98 lbs (7.7 kg)
Weight Empty	16.09 lbs (7.3 kg)
Buoyancy	136.91 lbs (62.1 kg)
Master Pack Weight	19.10 lbs (8.7 kg)

TEMPERATURE

Minimum Temperature	-40°F (-40 °C)
Maximum Temperature	190°F (87.8 °C)

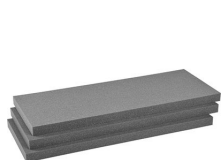
CERTIFICATIONS

IP67
MIL C-4150J
Def Stan 81-41

OTHER

Wheels	2
Master Pack	1
Military	yes

ACCESSORIES



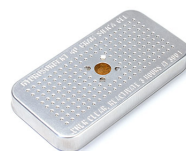
1701
3 pc. Replacement Foam Set



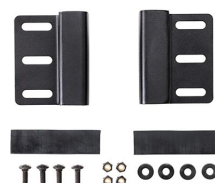
1703
Replacement O-ring



1506TSA
TSA Lock



1500D
Desiccant Silica Gel



LGMT-001P
Protector Case Roof Mount

Peli

c/ Provença, 388, Planta 7 • Barcelona, Spain 08025 • Phone: +34 934 674 999
info@peli.com • www.peli.com

Document created on 08-02-25