



iM2300 Storm

The Peli™ Storm Case™ has the same legendary DNA as our Peli Protector Case, with one primary difference: A unique Press and Pull latch that locks automatically, but open with a light touch. Guaranteed for life, the Peli Storm case is made in the USA and engineered using the finest components.

- **Watertight, crushproof, and dustproof**
- Two Press & Pull Latches
- Two Padlockable Hasps
- Double-layered, Soft-grip Handle
- Vortex™ Valve
- Powerful Hinges
- Lightweight Strong HPX® Resin



CONFIGURATIONS



iM2300
Standard



iM2300-X0000
No Foam



iM2300-X0002
With Padded Dividers



iM2300-X0001
With Foam

DIMENSIONS

Interior (LxWxD)	17.00 x 11.70" x 6.20 (43.2 x 29.7 x 15.7 cm)
Exterior (LxWxD)	18.20 x 13.90" x 6.70 (46.2 x 35.3 x 17 cm)
Lid Depth	2.00" (5.1 cm)
Bottom Depth	4.20" (10.7 cm)
Total Depth	6.2" (15.7 cm)
Int Volume	0.71 ft ³ (0.02 m ³)
Padlock Hole Diameter	1/4" (2.5 cm)

MATERIALS

Body	Injection Molded HPX™ high performance resin
Latch	Valox - Polybutylene Terephthalate (PBT)
Latch (Alt)	Xenoy - Polyester/Polycarbonate blend
O-Ring	EPDM
Pins	Stainless Steel
Pins (Alt)	Aluminum
Foam	1.3/1.35 polyester
Purge Body	Valox - Polybutylene Terephthalate (PBT)
Purge Body (Alt)	Xenoy - Polyester/Polycarbonate blend
Purge Vent	Gortex membrane

COLOURS

■ Black

■ OD Green

■ Yellow

WEIGHT

Weight With Foam	7.10 lbs (3.2 kg)
Weight Empty	5.90 lbs (2.7 kg)
Buoyancy	45.64 lbs (20.7 kg)
Master Pack Weight	33.00 lbs (15 kg)

TEMPERATURE

Minimum Temperature	-20°F (-28.9 °C)
Maximum Temperature	140°F (60 °C)

CERTIFICATIONS

MIL-STD-810F
ATA 300
FED-STD-101C

FOAM PROPERTIES

Layer 1 (Lid)	2.00" Convolute
Layer 2 (Base)	0.63" Pad
Layer 3 (Base)	1.81" Pick N Pluck
Layer 4 (Base)	1.81" Pick N Pluck

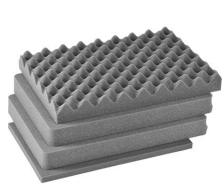
OTHER

Master Pack	4
Military	yes

ACCESSORIES



iM2300-LIDORG
Lid Organizer



iM2300-FOAM
4 pc. Replacement Foam Set



iM2300-DIV
Padded Divider Set



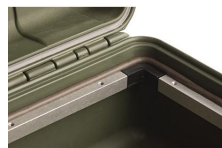
iM-STRAP-S-VER2
Padded Shoulder Strap



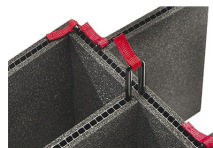
iM-LIDSTAY
Lid Stay



iM2300-M4-BEZEL-L
Lid Bezel (Metric)



iM2300-MBEZ-B
Base Bezel (Metric)



iM2300-TREK
TrekPak Case Divider Kit



1506TSA
TSA Lock



1500D
Desiccant Silica Gel

Peli

c/ Provença, 388, Planta 7 • Barcelona, Spain 08025 • Phone: +34 934 674 999
info@peli.com • www.peli.com

Document created on 09-24-20