



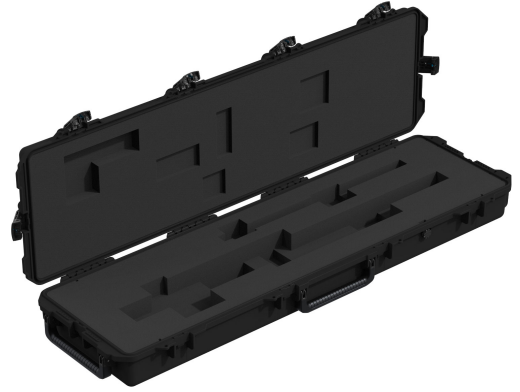
472-PWC-M240C

Waffenbehälter

Maschinengewehrkoffer

This Peli™ iM3300 case transports one M240C rifle or one M240C with infantry modification. This case is configured with a hinged lid, six Press & Pull™ latches, two padlockable hasps, two double-layered soft grip handles, a Vortex™ valve, and in-line wheels for easy transport.

- Sechs Druck- & Ziehverschlüsse
- Zwei doppelagige, weich zu fassende Handgriffe
- Zwei per Vorhängeschloss abschließbare Schnappschlösser
- Lineare Laufrollen
- Ventil Vortex®
- Starke Scharniere
- stabiles HPX® Harz
- Watertight, Dustproof and crushproof




GRÖSSE

INNERE	50.50 x 14.00" x 6.00 (128.3 x 35.6 x 15.2 cm)
AUSSEN	53.80 x 16.50" x 6.70 (136.7 x 41.9 x 17 cm)
Deckeltiefe	2.00" (5.1 cm)
Bodentiefe	4.00" (10.2 cm)
Gesamttiefe	6" (15.2 cm)
Innenvolumen	2.45 ft ³ (0.069 m ³)

MATERIALEN

Gehäuse	Injection Molded HPX™ high performance resin
Verschluss	Valox - Polybutylene Terephthalate (PBT)
Verschluss (Alt)	Xenoy - Polyester/Polycarbonate blend
O-Ring Dichtung	Silicone Sponge
Stifte	Stainless Steel
Schaumstoff	1.3/1.35 polyester
Ausgleichsschraube	Valox - Polybutylene Terephthalate (PBT)
Ausgleichsschraube (Alt)	Xenoy - Polyester/Polycarbonate blend
Ausgleichsventil	Gortex membrane

FARBEN

 Black	 OD Green
---	--

GEWICHT

Gewicht	25.05 lbs (11.4 kg)
----------------	---------------------

TEMPERATUR

min. Temperatur	-20°F (-28.9 °C)
max. Temperatur	140°F (60 °C)

ANDERE

Laufrollen

2

Peli

c/ Provença, 388, Planta 7 • Barcelona, Spain 08025 • Phone: +34 934 674 999
info@peli.com • www.peli.com

Document created on 03-12-25