



iM2050 Storm

The Peli™ Storm Case™ has the same legendary DNA as our Peli Protector Case, with one primary difference: A unique Press and Pull latch that locks automatically, but open with a light touch. Guaranteed for life, the Peli Storm case is made in the USA and engineered using the finest components.

- **Watertight, crushproof, and dustproof**
- Two Press & Pull Latches
- Two Padlockable Hasps
- Double-layered, Soft-grip Handle
- Vortex™ Valve
- Powerful Hinges
- Lightweight Strong HPX® Resin



CONFIGURATIONS



iM2050
Standard



iM2050-X0000
No Foam



iM2050-X0002
With Padded Dividers



iM2050-X0001
With Foam

DIMENSIONS

Interior (LxWxD)	9.50 x 7.50" x 4.25 (24.1 x 19.1 x 10.8 cm)
Exterior (LxWxD)	11.80 x 9.80" x 4.70 (30 x 24.9 x 11.9 cm)
Lid Depth	1.50" (3.8 cm)
Bottom Depth	2.75" (7 cm)
Total Depth	4.25" (10.8 cm)
Int Volume	0.18 ft ³ (0.005 m ³)
Padlock Hole Diameter	0.28" (0.7 cm)


MATERIALS

Body	Injection Molded HPX™ high performance resin
Latch	Valox - Polybutylene Terephthalate (PBT)
Latch (Alt)	Xenoy - Polyester/Polycarbonate blend
O-Ring	EPDM
Pins	Stainless Steel
Pins (Alt)	Aluminum
Foam	1.3/1.35 polyester
Purge Body	Valox - Polybutylene Terephthalate (PBT)
Purge Body (Alt)	Xenoy - Polyester/Polycarbonate blend

Purge Vent

Gortex membrane

COLOURS

 Black OD Green Yellow

WEIGHT

Weight With Foam	3.00 lbs (1.4 kg)
Weight Empty	2.70 lbs (1.2 kg)
Buoyancy	11.10 lbs (5 kg)
Master Pack Weight	23.20 lbs (10.5 kg)

TEMPERATURE

Minimum Temperature	-20°F (-28.9 °C)
Maximum Temperature	140°F (60 °C)

CERTIFICATIONS

IP67

OTHER

Master Pack	6
Military	yes

ACCESSORIES



iM2050-FOAM
3 pc. Replacement Foam Set



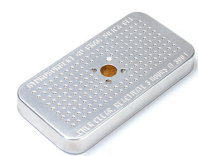
iM-STRAP-S-VER2
Padded Shoulder Strap



iM-LIDSTAY
Lid Stay



1506TSA
TSA Lock



1500D
Desiccant Silica Gel



iM20XX-M4-BEZEL
Base Bezel Kit (Metric)

Peli

c/ Provença, 388, Planta 7 • Barcelona, Spain 08025 • Phone: +34 934 674 999
info@peli.com • www.peli.com

Document created on 03-31-25