



1740

Protector

Long Case

From stargazing on the top of Mount Everest to a photoshoot in the forests of the Amazon, the 1740 is your ideal method for protecting a telescope, jack hammer, rifles, chainsaw, tripods and lights, and other long gear. We developed the 1740 for easy one person transport and it's depth and length allow for infinite storage possibilities. Like all Peli cases, standard features include a dustproof and watertight seal and it is backed by our legendary lifetime guarantee of excellence.

- **Also available from Peli: The 1770 Long Case**
- **Four extra-deep base-to-lid locking cleats that ensure maximum stacking stability**
- **Watertight, crushproof, and dustproof**
- 6-piece Pick n Pluck foam set
- O-ring seal
- Open cell core, polymer wall construction
- Stainless steel hardware and padlock protectors
- Two Integrated Automatic Pressure Equalization Valves
- Two rugged double-wide handles
- Wide-track polyurethane wheels with ball bearings and nylon hubs
- Peli's legendary lifetime guarantee**
- * Where applicable by law



CONFIGURATIONS



1740
Standard



1740NF
No Foam



1740WF
With Foam

DIMENSIONS

Interior (LxWxD)	40.98 x 12.92" x 12.13 (104.1 x 32.8 x 30.8 cm)
Exterior (LxWxD)	44.16 x 16.09" x 14.00 (112.2 x 40.9 x 35.6 cm)
Lid Depth	2.56" (6.5 cm)
Bottom Depth	9.57" (24.3 cm)
Total Depth	12.13" (30.8 cm)
Int Volume	3.72 ft ³ (0.105 m ³)
Padlock Hole Diameter	0.31" (0.8 cm)

MATERIALS

Body	Polypropylene
Latch	ABS
O-Ring	Polymer
Pins	Stainless Steel

Purge Body ABS
Purge Vent 3 Micron Hydrophobic Non-Woven

COLOURS

■ Black

WEIGHT

Weight With Foam 27.00 lbs (12.25 kg)
Weight Empty 22.00 lbs (9.98 kg)
Buoyancy 267.00 lbs (121.11 kg)
Master Pack Weight 28.47 lbs (12.91 kg)

TEMPERATURE

Minimum Temperature -40°F (-40 °C)
Maximum Temperature 190°F (87.8 °C)

OTHER

Master Pack 1
Nameplate yes

ACCESSORIES



1741
6 pc. Replacement Foam Set



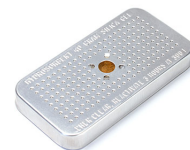
1743
Replacement O-ring



1630DC
Document Container
Accessory



1506TSA
TSA Lock



1500D
Desiccant Silica Gel

Peli

c/ Provença, 388, Planta 7 • Barcelona, Spain 08025 • Phone: +34 934 674 999
info@peli.com • www.peli.com

Document created on 06-13-26