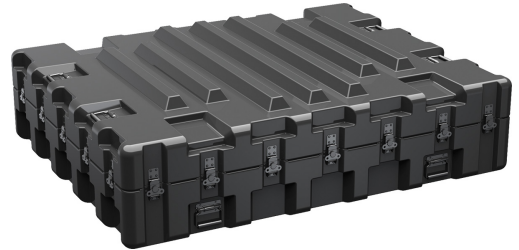




## BL6752-0805AC/HL

Trusted for over 40 years by the US Military, Single Lid Cases offer 20% more protective material in the edges and corners, where it is needed most, ensuring that valuable equipment is kept safe from any unforeseen elements. Available in several sizes, these cases are completely customizable with a wide range of bolt-on options like document holders, casters, humidity indicators and much more.

- Molded-in, tongue-in-groove gasketed parting lines for splash resistance and tight seals, even after impact
- Reinforced corners and edges for additional impact protection
- Molded-in ribs and corrugations for secure, non-slip stacking, columnar strength, and added protection
- Recessed hardware for extra protection
- Positive anti-shear locks, which prevent lid separation after impact, and reduce stress on hardware
- Patented molded-in metal inserts for catch and hinge attachment points, which provide strength and spread loads to the container
- One-piece construction, molded from lightweight, high-impact polyethylene



### DIMENSIONS

<b>Interior (LxWxD)</b>	67.43 x 51.87" x 13.16 (171.3 x 131.7 x 33.4 cm)
<b>Exterior (LxWxD)</b>	70.43 x 54.87" x 18.66 (178.9 x 139.4 x 47.4 cm)
<b>Lid Depth</b>	5.13" (13 cm)
<b>Bottom Depth</b>	8.03" (20.4 cm)
<b>Total Depth</b>	13.16" (33.4 cm)
<b>Int Volume</b>	26.64 ft <sup>3</sup> (0.754 m <sup>3</sup> )

### MATERIALS

<b>Body</b>	RotoMolded Polyethylene
<b>Latch</b>	Steel (Nickel-black Plated)
<b>O-Ring</b>	Silicone Sponge
<b>Foam</b>	No Foam, empty case standard Optional PE and PU, 1 and 2 lb. options filled and lined
<b>Purge Body</b>	Aluminum
<b>Handle</b>	Heavy Duty Injection Molded Standard
<b>Hardware</b>	Yellow Carbon Steel Standard

### COLOURS

■ Gray - 133 Fed Std  
26270

### WEIGHT

<b>Weight</b>	145.00 lbs (65.8 kg)
<b>Buoyancy</b>	2460.39 lbs (1116 kg)
<b>Master Pack Weight</b>	147.00 lbs (66.7 kg)

TEMPERATURE

<b>Minimum Temperature</b>	-20°F (-28.9 °C)
<b>Maximum Temperature</b>	140°F (60 °C)

OTHER

<b>Military</b>	yes
-----------------	-----

**Pelican**  
23215 Early Ave • Torrance, CA 90505 USA • Phone: (310) 326-4700 • (800) 473-5422 • Fax: (310) 326-3311  
[sales@pelican.com](mailto:sales@pelican.com) • [www.pelican.com](http://www.pelican.com)

*Document created on 08-02-25*