



1620EU Protector

The Peli 1620 is a large sized protector case that comes with comfortable wheels and retractable handle, as well as with 2 comfortable side carrying handles, 4 double-step latches -which are secure, but easy to open when needed, an automatic purge valve -that equalizes air pressure, 2 strong wheels, a watertight silicone O-ring lid and stainless steel hardware. Rugged, uncompromising and trusted, Peli cases protect what matters to you, from the everyday to the extraordinary. Peli Protector Cases are made with copolymer polypropylene and cutting edge technology, which makes them virtually indestructible and resistant to the most extreme conditions. Proven for over 45 years in the most demanding environments. Engineered and manufactured in the U.S and in Germany. Guaranteed for Life and sustainable due to its long life.

- **Strong polyurethane wheels with stainless steel bearings**
- **Watertight, crushproof, and dustproof**
- 4 level Pick N Pluck™ with convoluted lid foam
- Automatic pressure equalization valve - balances interior pressure, keeps water out
- Easy open double-throw latches
- Fold down handles
- O-ring seal
- Open cell core with solid wall design - strong, light weight
- Retractable extension trolley handle
- Stainless steel hardware and padlock protectors
- Made in Germany



CONFIGURATIONS



1620EU
Standard



1624
With Padded Dividers



1620NF
No Foam



1620WF
With Foam

DIMENSIONS

| | |
|------------------------------|--|
| Interior (LxWxD) | 21.37 x 16.31" x 12.56 (54.3 x 41.4 x 31.9 cm) |
| Exterior (LxWxD) | 24.81 x 19.37" x 13.87 (63 x 49.2 x 35.2 cm) |
| Lid Depth | 2.06" (5.2 cm) |
| Bottom Depth | 10.50" (26.7 cm) |
| Total Depth | 12.56" (31.9 cm) |
| Int Volume | 2.53 ft ³ (0.072 m ³) |
| Padlock Hole Diameter | 5/16" (12.7 cm) |

MATERIALS

| | |
|-------------|---------------|
| Body | Polypropylene |
|-------------|---------------|

| | |
|-------------------|--------------------------------|
| Latch | ABS |
| O-Ring | Polymer |
| Pins | Stainless Steel |
| Foam | 1.3 lb Polyurethane |
| Purge Body | ABS |
| Purge Vent | 3 Micron Hydrophobic Non-Woven |

COLOURS

■ Black

WEIGHT

| | |
|---------------------------|---------------------|
| Weight With Foam | 26.01 lbs (11.8 kg) |
| Weight Empty | 24.47 lbs (11.1 kg) |
| Buoyancy | 149.91 lbs (68 kg) |
| Master Pack Weight | 26.90 lbs (12.2 kg) |

TEMPERATURE

| | |
|----------------------------|-----------------|
| Minimum Temperature | -40°F (-40 °C) |
| Maximum Temperature | 210°F (98.9 °C) |

CERTIFICATIONS

IP67
MIL C-4150J
Def Stan 81-41

OTHER

| | |
|--------------------------|-----|
| Wheels | 2 |
| Extendable Handle | yes |
| Master Pack | 1 |
| Nameplate | yes |
| Military | yes |

ACCESSORIES



1609
Lid Organizer



1621
6 pc. Replacement Foam Set



1623
Replacement O-ring



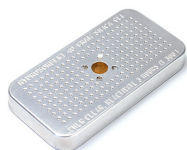
1625
Padded Divider Set



1507
Quick Mounts - set of 4



1506TSA
TSA Lock



1500D
Desiccant Silica Gel

Peli

c/ Provença, 388, Planta 7 • Barcelona, Spain 08025 • Phone: +34 934 674 999
info@peli.com • www.peli.com

Document created on 04-01-25