



iM2720

Storm

Travel Case

The Peli™ Storm Case™ has the same legendary DNA as our Peli Protector Case, with one primary difference: A unique Press and Pull latch that locks automatically, but open with a light touch.

Guaranteed for life, the Peli Storm case is made in the USA and engineered using the finest components.

- Four Press & Pull Latches
- Two Padlockable Hasps
- Two Double-layered, Soft-grip Handles
- Powerful Hinges
- O-ring seal



CONFIGURATIONS



iM2720
Standard



iM2720-X0000
No Foam



iM2720-X0002
With Padded Dividers



iM2720-X0006
With TrekPak Divider System



iM2720-X0001
With Foam

DIMENSIONS

Interior (LxWxD)	22.00 x 17.00" x 10.00 (55.9 x 43.2 x 25.4 cm)
Exterior (LxWxD)	24.60 x 19.70" x 11.70 (62.5 x 50 x 29.7 cm)
Lid Depth	2.00" (5.1 cm)
Bottom Depth	8.00" (20.3 cm)
Total Depth	10" (25.4 cm)
Int Volume	2.16 ft ³ (0.061 m ³)
Padlock Hole Diameter	0.31" (0.8 cm)

MATERIALS

Body	Injection Molded HPX™ high performance resin
Latch	Valox - Polybutylene Terephthalate (PBT)
Latch (Alt)	Xenoy - Polyester/Polycarbonate blend
O-Ring	EPDM
Pins	Stainless Steel
Pins (Alt)	Aluminum
Foam	1.3/1.35 polyester
Purge Body	Valox - Polybutylene Terephthalate (PBT)
Purge Body (Alt)	Xenoy - Polyester/Polycarbonate blend
Purge Vent	Gortex membrane

COLOURS

■ Black

■ OD Green

■ Yellow

WEIGHT

Weight With Foam	22.00 lbs (10 kg)
Weight Empty	16.80 lbs (7.6 kg)
Buoyancy	138.14 lbs (62.7 kg)
Master Pack Weight	24.00 lbs (10.9 kg)

TEMPERATURE

Minimum Temperature	-20°F (-28.9 °C)
Maximum Temperature	140°F (60 °C)

CERTIFICATIONS

IP67

OTHER

Extendable Handle	yes
Master Pack	1
Military	yes

ACCESSORIES



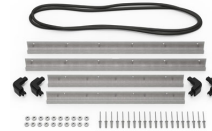
iM27XX-UTILITYORG
Utility Organizer



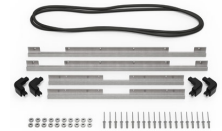
iM2720-FOAM
5 pc. Replacement Foam Set



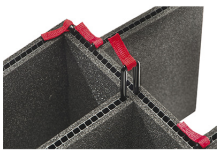
iM-LIDSTAY
Lid Stay



iM2720-M4-BEZEL
Base Bezel Kit (Metric)



iM2720-M4-BEZEL-L
Lid Bezel Kit (Metric)



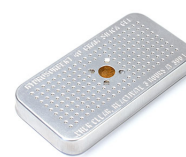
iM2720-TREK
TrekPak Case Divider Kit



1610TPDIV
Extra TrekPak Dividers



1506TSA
TSA Lock



1500D
Desiccant Silica Gel

Peli

c/ Provença, 388, Planta 7 • Barcelona, Spain 08025 • Phone: +34 934 674 999
info@peli.com • www.peli.com

Document created on 04-01-25