



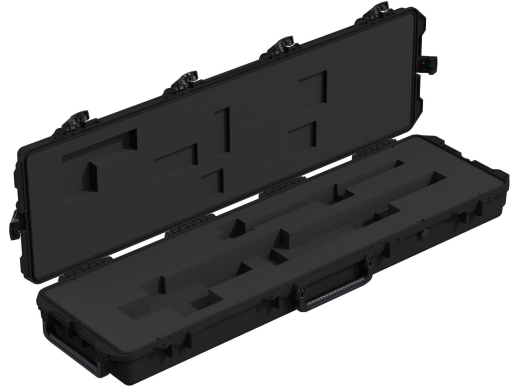
## 472-PWC-M240C

### Mobile Armory™

#### Machine Gun Case

This Peli™ iM3300 case transports one M240C rifle or one M240C with infantry modification. This case is configured with a hinged lid, six Press & Pull™ latches, two padlockable hasps, two double-layered soft grip handles, a Vortex™ valve, and in-line wheels for easy transport.

- Six Press & Pull Latches
- Two Double-layered, Soft-grip Handles
- Two Padlockable Hasps
- In-line Wheels
- Vortex™ Valve
- Powerful Hinges
- Lightweight Strong HPX™ Resin
- Watertight, Dustproof and crushproof



#### DIMENSIONS

<b>Interior (LxWxD)</b>	50.50 x 14.00" x 6.00 (128.3 x 35.6 x 15.2 cm)
<b>Exterior (LxWxD)</b>	53.80 x 16.50" x 6.70 (136.7 x 41.9 x 17 cm)
<b>Lid Depth</b>	2.00" (5.1 cm)
<b>Bottom Depth</b>	4.00" (10.2 cm)
<b>Total Depth</b>	6" (15.2 cm)
<b>Int Volume</b>	2.45 ft <sup>3</sup> (0.069 m <sup>3</sup> )

#### MATERIALS

<b>Body</b>	Injection Molded HPX™ high performance resin
<b>Latch</b>	Valox - Polybutylene Terephthalate (PBT)
<b>Latch (Alt)</b>	Xenoy - Polyester/Polycarbonate blend
<b>O-Ring</b>	Silicone Sponge
<b>Pins</b>	Stainless Steel
<b>Foam</b>	1.3/1.35 polyester
<b>Purge Body</b>	Valox - Polybutylene Terephthalate (PBT)
<b>Purge Body (Alt)</b>	Xenoy - Polyester/Polycarbonate blend
<b>Purge Vent</b>	Gortex membrane

#### COLOURS

■ Black	■ OD Green
---------	------------

#### WEIGHT

<b>Weight</b>	25.05 lbs (11.36 kg)
---------------	----------------------

#### TEMPERATURE

<b>Minimum Temperature</b>	-20°F (-28.9 °C)
<b>Maximum Temperature</b>	140°F (60 °C)

## OTHER

---

**Wheels**

2

---

### **Peli**

c/ Provença, 388, Planta 7 • Barcelona, Spain 08025 • Phone: +34 934 674 999  
[info@peli.com](mailto:info@peli.com) • [www.peli.com](http://www.peli.com)

*Document created on 05-24-26*