



iM3300

Storm

Long Case

The Peli™ Storm Case™ has the same legendary DNA as our Peli Protector Case, with one primary difference: A unique Press and Pull latch that locks automatically, but open with a light touch. Guaranteed for life, the Peli Storm case is made in the USA and engineered using the finest components.

- Six Press & Pull Latches
- Four Padlockable Hasps
- Three Double-layered, Soft-grip Handles
- Vortex™ Valve
- Powerful Hinges
- O-ring seal
- Lightweight Strong HPX® Resin



CONFIGURATIONS



iM3300
Standard



iM3300-X0000
No Foam



iM3300-X0001
With Foam

DIMENSIONS

Interior (L×W×D)	50.50 x 14.00" x 6.00 (128.3 x 35.6 x 15.2 cm)
Exterior (L×W×D)	53.80 x 16.50" x 6.70 (136.7 x 41.9 x 17 cm)
Lid Depth	2.00" (5.1 cm)
Bottom Depth	4.00" (10.2 cm)
Total Depth	6" (15.2 cm)
Int Volume	2.45 ft ³ (0.069 m ³)
Padlock Hole Diameter	0.35" (0.9 cm)

MATERIALS

Body	Injection Molded HPX™ high performance resin
Latch	Valox - Polybutylene Terephthalate (PBT)
Latch (Alt)	Xenoy - Polyester/Polycarbonate blend
O-Ring	EPDM
Pins	Stainless Steel
Pins (Alt)	Aluminum
Foam	1.3/1.35 polyester
Purge Body	Valox - Polybutylene Terephthalate (PBT)
Purge Body (Alt)	Xenoy - Polyester/Polycarbonate blend
Purge Vent	Gortex membrane

COLOURS

■ Black

■ OD Green

WEIGHT

Weight With Foam	23.00 lbs (10.4 kg)
Weight Empty	19.10 lbs (8.7 kg)
Buoyancy	153.86 lbs (69.8 kg)
Master Pack Weight	24.50 lbs (11.1 kg)

TEMPERATURE

Minimum Temperature	-20°F (-28.9 °C)
Maximum Temperature	140°F (60 °C)

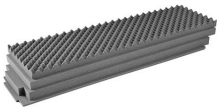
CERTIFICATIONS

IP67

OTHER

Master Pack	1
Military	yes

ACCESSORIES



iM3300-FOAM
4 pc. Replacement Foam Set



iM-STRAP-S-VER2
Padded Shoulder Strap



iM-LIDSTAY
Lid Stay



1506TSA
TSA Lock



1500D
Desiccant Silica Gel

Peli

c/ Provença, 388, Planta 7 • Barcelona, Spain 08025 • Phone: +34 934 674 999
info@peli.com • www.peli.com

Document created on 10-31-24